

▶ STINGER SNAP-FOAM DRIVE-THROUGH SPILL BERM

Ideal Solution for Indoor and Outdoor Drum Storage!

After a one-time setup, the ENPAC® Snap-Foam spill containment berm allows for continual drive in and out without ever having to modify the sidewalls.



MANY STANDARD SIZES
AVAILABLE OR CUSTOMIZABLE
TO APPLICATION

FOLDS TO A FRACTION OF ITS SIZE
FOR STORAGE AND TRANSPORT

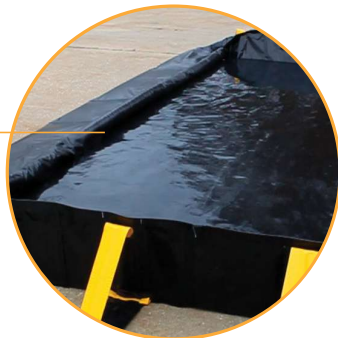
ELVALOY COPOLYMER – RIP, TEAR,
AND PUNCTURE RESISTANCE

GROUND PAD AND
TRACMAT AVAILABLE TO
PROLONG LIFE OF BERM
(NOT PICTURED)

COLLAPSIBLE SIDEWALL
STAYS CONNECTED TO
BERM – NO LOOSE PARTS
TO BE LOST

STAYS FOLD INTO A
TRIANGLE AND EASILY
SLIDE IN TO HOLD THE
SIDEWALLS UPRIGHT

TRUE DRIVE IN AND OUT
CAPABILITY AS FOAM WALLS
AUTOMATICALLY RISE DURING
A SPILL EVENT



STINGER SNAP-FOAM DRIVE-THROUGH SPILL BERM ELVALOY COPOLYMER



PART NUMBER	DIMENSIONS LxWxH FT. (M.)	WEIGHT LB. (KG.)	SPILL CAPACITY* GAL. (L.)
48-10161-BK-SF	10 x 16 x 1 (3 x 4.9 x 0.3)	90 (40)	1196 (4,527)
48-10261-BK-SF	10 x 26 x 1 (3 x 7.9 x 0.3)	125 (56)	1944 (7,358)
48-12301-BK-SF	12 x 30 x 1 (3.7 x 9 x 0.3)	165 (74)	2,692 (10,190)
48-12361-BK-SF	12 x 36 x 1 (3.7 x 11 x 0.3)	180 (81)	3,231 (12,230)
48-12501-BK-SF	12 x 50 x 1 (3.7 x 15 x 0.3)	215 (97)	4,488 (16,988)
48-12601-BK-SF	12 x 60 x 1 (3.7 x 18.3 x 0.3)	276 (125)	5,385 (20,384)
48-14401-BK-SF	14 x 40 x 1 (4.3 x 12 x 0.3)	216 (97)	4,189 (15,857)
48-14541-BK-SF	14 x 54 x 1 (4.3 x 16.5 x 0.3)	252 (114)	5,654 (21,402)
48-14561-BK-SF	14 x 56 x 1 (4.3 x 17 x 0.3)	265 (120)	5,864 (22,197)
48-14851-BK-SF	14 x 84 x 1 (4.3 x 25.9 x 0.3)	500 (226)	8,901 (33,693)

Regulations: EPA 40 CFR 264.175, SPCC, NPDES

CUSTOMIZE TO ANY SIZE! ADDITIONAL SIZES ALSO AVAILABLE ON WWW.ENPAC.COM

STINGER SELF-RISING FOAM WALL SPILL BERM ELVALOY COPOLYMER



PART NUMBER	DIMENSIONS LxWxH FT. (M.)	WEIGHT LB. (KG.)	SPILL CAPACITY* GAL. (L.)
48-461-BK-SR	4 x 6 x 1 (1.2 x 1.8 x 0.3)	54 (24)	179 (678)
48-10101-BK-SR	10 x 10 x 1 (3 x 3 x 0.3)	60 (27.3)	748 (2,831)
48-10161-BK-SR	10 x 16 x 1 (3 x 4.9 x 0.3)	75 (34)	1,196 (4,527)
48-12261-BK-SR	12 x 26 x 1 (3.7 x 7.9 x 0.3)	105 (47)	2,334 (8,835)
48-12301-BK-SR	12 x 30 x 1 (3.7 x 9.1 x 0.3)	120 (54)	2,692 (10,190)
48-12361-BK-SR	12 x 36 x 1 (3.7 x 11 x 0.3)	160 (72)	3,231 (12,230)
48-14401-BK-SR	14 x 40 x 1 (4.3 x 12 x 0.3)	315 (142)	4,189 (15,857)
48-14541-BK-SR	14 x 54 x 1 (4.3 x 16.5 x 0.3)	349 (158)	5,654 (21,402)

Regulations: EPA 40 CFR 264.175, SPCC, NPDES

*The berm spill capacity is based on dimensions, low flow rate, a level surface and no displaced volume.